



GOOD MORNING

Have Good Trading Day

WEDNESDAY



Price is what you pay.  
Value is what you get.

- Warren Buffet



## MARKET PULSE

### INDIAN INDICES

NAME	CMP	NET CH.	%
SENSEX	25305	+75	+0.30
NIFTY	7748	+17	+0.23

### INDIAN ADR'S

SYMBOL	CLOSE	GAIN/ LOSS %
DRREDDY	44.71	-0.13
HDFCBANK	63.49	+0.44
ICICIBK	6.73	+0.60
INFY	18.59	+1.09
TATAMOTOR	29.15	+3.92
WIPRO	12.00	+0.42

### FII AND MF ACTIVITY

SYMBOL	In Crs.
FIIs Eq (Provisional)	-815.53
FIIs Index Future	-373.22
FIIs Index Options	-750.60
FIIs Stock Future	351.47
FIIs Stock Options	-55.29
DIIs Eq (Provisional)	989.95

### CURRENCY

RBI RATE	24-MAY-2016
RUPEE - \$	67.7060
EURO	75.9323
YEN 100	61.9700
GBP	98.0654

## MARKET PULSE

### GLOBAL INDICES

NAME	CMP	NET CH.	%
DOW	17706	+213	+1.22
NASDAQ	4861	+95	+2.00
NIKKEI	16795	+296	+1.80
HANG SENG	20353	+522	+2.63
SGX NIFTY	7828	+73	+0.94

### WORLD COMMODITIES

FUTURE	U\$\$	CHANGES
CRUDE	49.25	+0.63
NATURAL GAS	2.141	-0.005
GOLD	1228.4	-0.80
SILVER	16.270	+0.016
COPPER	2.0775	+0.0110

### WORLD EVENTS

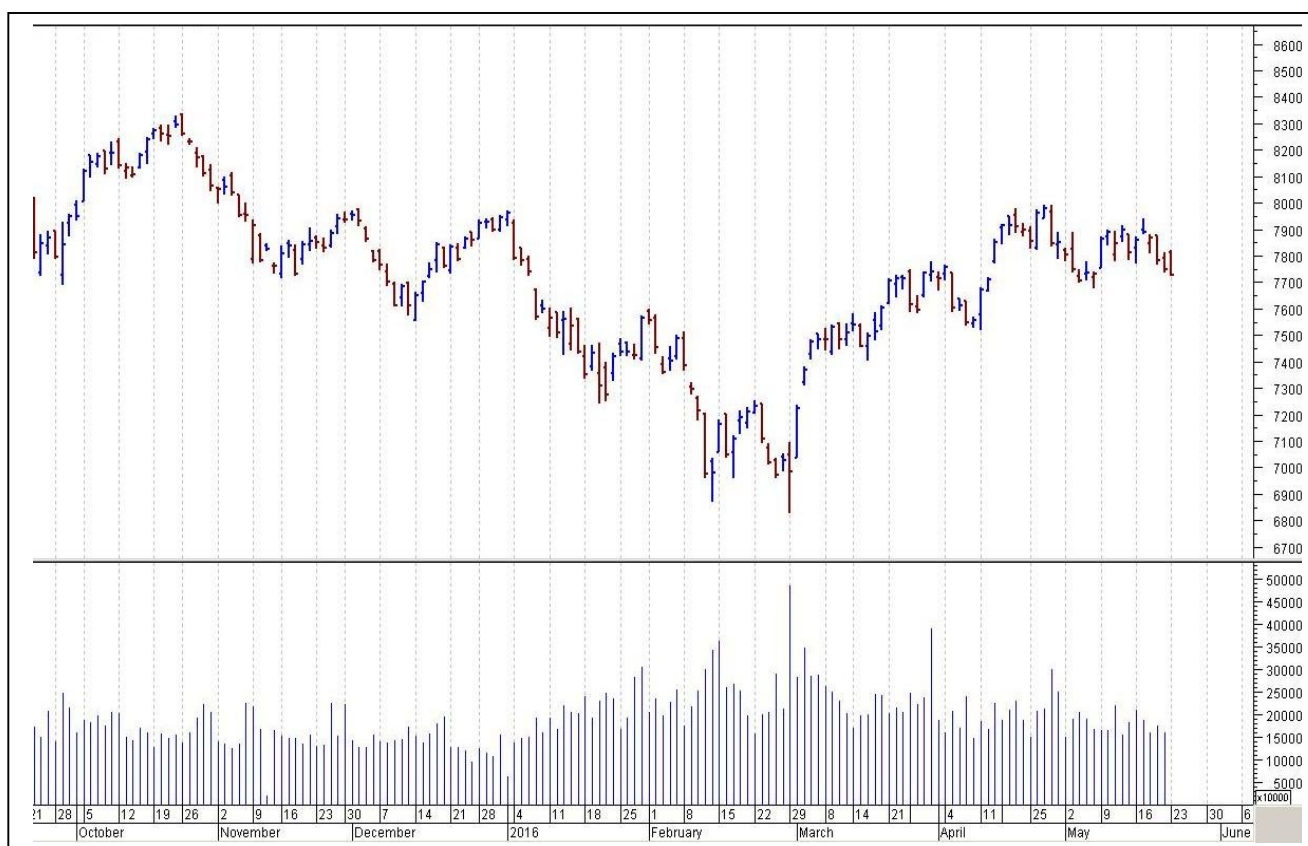
- US: Goods Trade Balance
- Crude Oil Inventories
- UK: NIL

## TOP STORY

- M&M-Incorporates a subsidiary in Nigeria -To explore & expand West African markets
- Punjab National Bank -Not to lend to iron & steel sector till sector recovers: FE -Identifies 53 corporate accounts for sale to asset reconstruction companies (ARCs)
- Narayana Healthcare entered into agreement with Kenyan Doctors & Financial Institutions to set up a multi specialty hospital in Nairobi
- Mercator board meeting on May 20 to consider fund raising via preference shares
- Bharti Airtel says concluded spectrum purchase deal with Videocon for Rs 4,428 crore
- JSW Group looking to buy more distressed assets: FE
- Monsanto rejects Bayer's USD 62 billion offer
- Tech Mahindra Q4 Cons Net Profit Up 18.2 % At Rs 897 Cr Vs Rs 759.2 Cr (QoQ) Cons Total Income Up 2.7 % At Rs 6,883.7 Cr Vs Rs 6,701 Cr (QoQ)



## NIFTY CHART



## MARKET COMMENTARY

After registering losses for four consecutive sessions, Indian benchmark indices managed a modestly positive close on Tuesday, as investors accumulated quality stocks at attractive levels. Though, the session largely remained characterized by choppiness as the aimless indices moved only sideways in a tight band amid lack of triggers. Sentiments got some support after March-quarter earnings mostly meeting street's estimates despite a slowdown in global growth and tepid demand. Strength in European markets too aided sentiments. Some support came in with the report from private forecasting agency Skymet raising India's monsoon forecast to 109% of the long period average from 105% on the back of a waning El Nino. The agency also said that conditions are favorable for timely monsoon in Kerala. However, fears of an interest rate hike by the US Federal Reserve in June along with decline in crude oil prices and weakness in rupee capped the upside gains. For today's trade Nifty likely to trade in the range between 7765 – 7795 in the upper side and 7725 – 7705 in the lower side.

### MARKET LEVELS

	CMP	SUPPORT LEVELS				RESISTANCE LEVELS			
NIFTY	7748	7725	7705	7685	7645	7765	7795	7825	7845
USDINR	67.78	67.65	67.6	67.5	67.35	67.85	67.9	68.05	68.15





#### BULK DEALS (BSE)

SCRIP	CLIENT NAME	BUY/SELL	QUANTITY	PRICE
IDFCBANK	CLSA GLOBAL MARKETS PTE LTD	S	44,037,474	47.16
IDFCBANK	PLATINUM INVESTMENT MGMNT LTD A/C PLATINUM INTERNATIONAL FND	B	28,913,027	47.16

#### BULK DEALS (NSE)

SCRIP	CLIENT NAME	BUY/SELL	QUANTITY	PRICE
GHCL	KACHOLIA ASHISH	BUY	1480100	164.5
GHCL	SHALIN DISC. FAMILY TRUST	SELL	1526000	164.3
VMART	NORGES BANK- GOVERNMENT PENSION FUND GLOBAL	BUY	535000	510
VMART	KOTAK MAHINDRA (INTERNATIONAL) LIMITED	SELL	535000	510
JUSTDIAL	FMRC FIDELITY EMERGING MARKETS FUND	SELL	504997	644.18

#### SCRIP'S IN F&O BAN

(To resume for normal trading below 80% of market wide limit required)

INDIACEM, JINDALSTEL

#### Initial Public Offering (IPO)

Company Name	Security type	Issue Start Date	Issue End Date	Status
NIL				



NIFTY 50 STOCKS: SUPPORT & RESISTANCE						
Symbol	Close	Support 1	Support 2	Pivot Point	Resistance1	Resistance2
ACC	1446	1423	1399	1436	1460	1474
ADANI PORTS	181	178	175	180	183	184
AMBUJACEM	215	213	210	215	218	220
ASIANPAINT	956	945	933	953	965	974
AXISBANK	489	484	478	487	493	496
BAJAJ-AUTO	2379	2356	2332	2388	2412	2445
BANKBARODA	130	128	126	130	132	134
BHARTIARTL	345	342	339	345	347	350
BHEL	118	116	114	117	119	121
BOSCHLTD	21222	20714	20207	21032	21540	21857
BPCL	896	883	869	904	917	938
CAIRN	137	135	133	136	138	139
CIPLA	494	489	483	497	502	511
COALINDIA	280	278	276	280	281	283
DRREDDY	3025	3014	3002	3027	3038	3052
GAIL	371	366	361	371	376	381
GRASIM	4290	4216	4141	4267	4342	4393
HCLTECH	739	732	726	737	744	748
HDFC	1173	1162	1151	1170	1181	1189
HDFCBANK	1140	1136	1132	1140	1144	1148
HEROMOTOCO	2899	2881	2863	2894	2912	2925
HINDALCO	86	84	82	86	88	90
HINDUNILVR	823	818	812	821	827	830
ICICIBANK	225	222	220	224	226	227
IDEA	107	105	102	108	110	113
INDUSINDBK	1044	1036	1029	1046	1054	1064
INFY	1188	1180	1172	1186	1194	1200
ITC	348	346	344	349	351	354
KOTAKBANK	698	693	688	698	703	708
LT	1242	1227	1213	1238	1253	1263
LUPIN	1465	1438	1410	1471	1499	1532
M&M	1295	1268	1242	1286	1312	1329
MARUTI	3924	3899	3874	3918	3944	3963
NTPC	139	136	134	138	141	143
ONGC	207	205	202	207	209	211
PNB	72	71	70	72	73	74
POWERGRID	147	146	144	147	149	150
RELIANCE	940	931	922	938	947	953
SBIN	170	167	165	169	171	173
SUNPHARMA	772	767	761	777	783	793
TATAMOTORS	389	384	379	388	393	397
TATAPOWER	72	71	70	72	73	73
TATASTEEL	318	313	309	316	320	323
TCS	2468	2455	2443	2472	2484	2501
TECHM	480	468	456	477	489	498
ULTRACEMCO	3174	3129	3084	3155	3201	3227
VEDL	97	95	92	96	99	100
WIPRO	538	535	533	538	540	543
YESBANK	977	970	964	978	985	992
ZEEL	439	433	428	437	443	447



## CORPORATE ACTION / BOARD MEETINGS

NSE Download Ref No:NSE/FAOP/32249:- Exclusion of Futures and Options contracts on IOB and UCOBANK w.e.f. July 01, 2016

NSE Download Ref No. : NSE/SURV/32363:-Future Retail Limited (Symbol - FRL and Symbol - FRLDVR) shall be transferred from trade fortrade segment (series: BE) to rolling segment (series: EQ) with effect from May 25, 2016

NSE Download Ref No. : NSE/SURV/32373:-Jindal Photo Limited (JINDALPHOT) shall be transferred from trade for trade segment (series:BE) to rolling segment (series: EQ) with effect from May 26, 2016

NSE Download Ref No. : NSE/SURV/32380:- Crompton Greaves Consumer Electricals Limited (CROMPTON) shall be transferred from trade for trade segment (series: BE) to rolling segment (series: EQ) with effect from May 27, 2016 (Friday)

NSE Download Ref No : NSE/FAOP/32406:- Exclusion of Futures and Options contracts on Unitech Limited (UNITECH) w.e.f. July 29, 2016

### BOARD MEETINGS

COMPANY NAME	DATE	PURPOSE	RS. PER SH.
RAYMOND	26-May-16	Dividend	3
TRIDENT	26-May-16	Annual General Meeting/ Dividend	0.3
YESBANK	30-May-16	Annual General Meeting/ Dividend	10
PAGEIND	31-May-16	Dividend	
NBCC	2-Jun-16	Face Value Split From Rs 10 To Rs 2	
KITEX	2-Jun-16	Annual General Meeting/ Dividend	0.75
LAKSHVILAS	2-Jun-16	Annual General Meeting/ Dividend	3
SBIN	3-Jun-16	Dividend	
SIL	9-Jun-16	Annual General Meeting/ Dividend	0.75
INFY	9-Jun-16	Annual General Meeting/ Dividend	14.25
ESSELPACK	9-Jun-16	Dividend	2.2
GRUH	10-Jun-16	Annual General Meeting/ Dividend	2.3
KANSAINER	14-Jun-16	Annual General Meeting/ Dividend	3.05
ICICIBANK	16-Jun-16	Annual General Meeting/ Dividend	5
ASIANPAINT	16-Jun-16	Annual General Meeting/ Dividend	5.3
EVERESTIND	21-Jun-16	Annual General Meeting/ Dividend	5
HINDUNILVR	22-Jun-16	Annual General Meeting/ Dividend	9.5
INDUSINDBK	23-Jun-16	Annual General Meeting/ Dividend	4.5
INDIANB	23-Jun-16	Annual General Meeting/ Dividend	1.5
WELSPUNIND	23-Jun-16	Annual General Meeting/ Dividend	0.05

## NEWS & RUMOURS:

- Gold (Spot Dollar) major support = \$1206/\$1175 & Resistance = \$1260/\$1296.
- Crude oil range->\$43 to \$53.
- Stocks Climb as Financial Shares Lead Gains; Dollar Strengthens: - U.S. stocks joined a rally in European shares as growing conviction that the Federal Reserve will raise interest rates this summer sparked gains in financial shares. The dollar rose and Treasuries fell as housing data reinforced confidence in the strength of the American economy.
- Stronger dollar, Fed rate hike concerns send gold to fresh 1-month low: - Gold futures sank to a one-month low in North American trade on Tuesday, [extending overnight losses](#), as the dollar edged higher amid speculation the Federal Reserve will raise interest rates as early as next month.
- U.S. new home sales jump to 8-year high: - U.S. new home soared to the highest level since the start of 2008 in April The Commerce Department said new home sales rose by 16.6% to an annual unit rate of 619,000 last month. March's home sales were revised to show a 1.3% decline to 531,000 units, from a previously reported drop of 1.5%.
- Dollar hits fresh 2-month peak on strong U.S. data: - The dollar pushed higher to hit a fresh two-month peak against the other major currencies on Tuesday, after data showed that U.S. new home sales rose far more than expected in April added to expectations for a June rate hike by the Federal Reserve.
- Oil turns positive as focus turns to U.S. supply outlook: - Oil reversed early losses to turn positive on Tuesday, as investors awaited crude oil inventory data from the United States that was expected to show a shrinking supply overhang.

## TRENDS & OUTLOOK – DATE: 25- May- 2016

### PRECIOUS METALS:

COMMDITY (MCX)	S2	S1	PIVOT POINT	R1	R2
GOLD (June)	28870	29130	29471	29699	29910
SILVER (July)	37200	38410	39550	40545	41700

### BASE METALS

COMMDITY (MCX)	S2	S1	PIVOT POINT	R1	R2
COPPER (June)	302	307	311	317	321
ZINC (May)	118.60	121.30	123.45	126.30	128.50
LEAD (May)	107.10	109.20	111.75	114.60	117.30
NICKEL (May)	540	555	569	588	603

### ENERGY

COMMDITY (MCX)	S2	S1	PIVOT POINT	R1	R2
CRUDE OIL (June)	3060	3150	3270	3390	3445
NATURAL GAS (May)	126	131	137	142	147

### DATE TALKS : TODAY'S ECONOMIC DATA :

German Ifo Business Climate, ZEW Economic Expectations, ECOFIN Meetings of EUR, Goods Trade Balance, Belgian NBB Business Climate of EUR, HPI, Flash Services PMI, BOC Rate Statement, Crude Oil Inventories.





Registered Office

Indira House, 3rd Floor, 5 Topiwala Lane,  
Opp. Lemington Road Police Station, Grant Road (East), Mumbai - 400007.

Corporate Office

'Ramavat House' E-15, Saket Nagar, Indore - 452018 (M.P.)

Customer Care

Tel: +91-731-4097170/ 71/ 72/ 73/ 74 M. +91 93031 72345

Email: [customercare@indiratrade.com](mailto:customercare@indiratrade.com) [www.indiratrade.com](http://www.indiratrade.com)



INSTITUTIONAL DEALING UNIT

Africa House, 5, Topiwalla Lane, Lamington Road, Mumbai, 400007

Tel: +91 22 30080678 Fax : +91 22 23870767 Email : [ie@indiratrade.com](mailto:ie@indiratrade.com)

**Disclaimer**

This report is for private circulation within the Indira Group. This report is strictly confidential and for information of the selected recipient only and may not be altered in any way, transmitted to, copied or distributed, in part or in whole, to any other person or to the media or reproduced in any form. This report should not be construed as an offer or solicitation to buy or sell any securities or any interest in securities. It does not constitute a personal recommendation or take into account the particular investment objectives, financial situations, or any such factor. The information, opinions estimates and forecasts contained here have been obtained from, or are based upon, sources we believe to be reliable, but no representation of warranty, express or implied, is made by us to their accuracy or completeness. Opinions expressed are our current opinions as of the date appearing on this material only and are subject to change without notice.